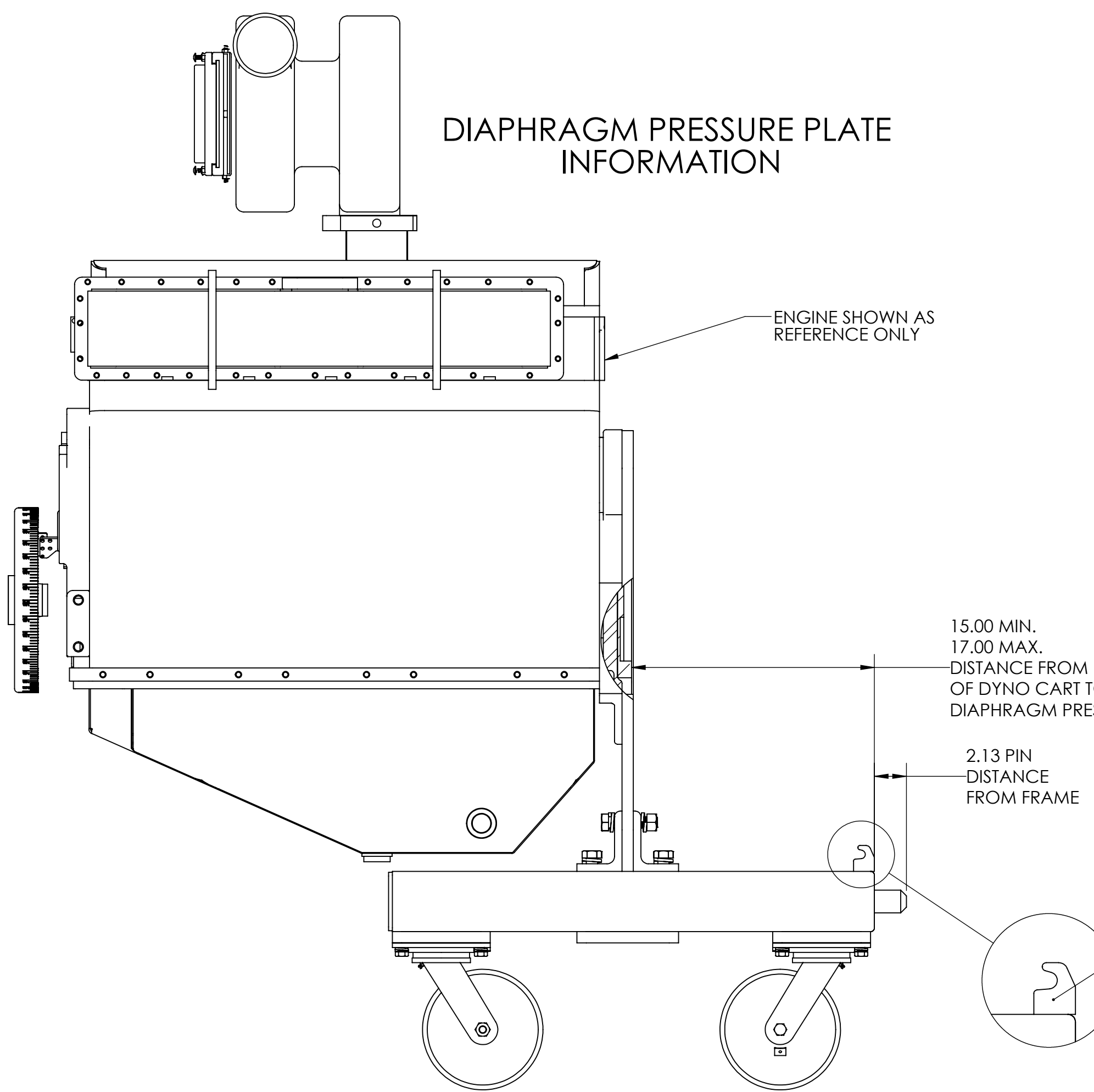


CROWER PRESSURE PLATE INFORMATION

13.25 MIN.  
14.25 MAX.  
DISTANCE FROM  
EDGE OF DYNO  
CART TO CROWER  
PRESSURE PLATE



DIAPHRAGM PRESSURE PLATE INFORMATION

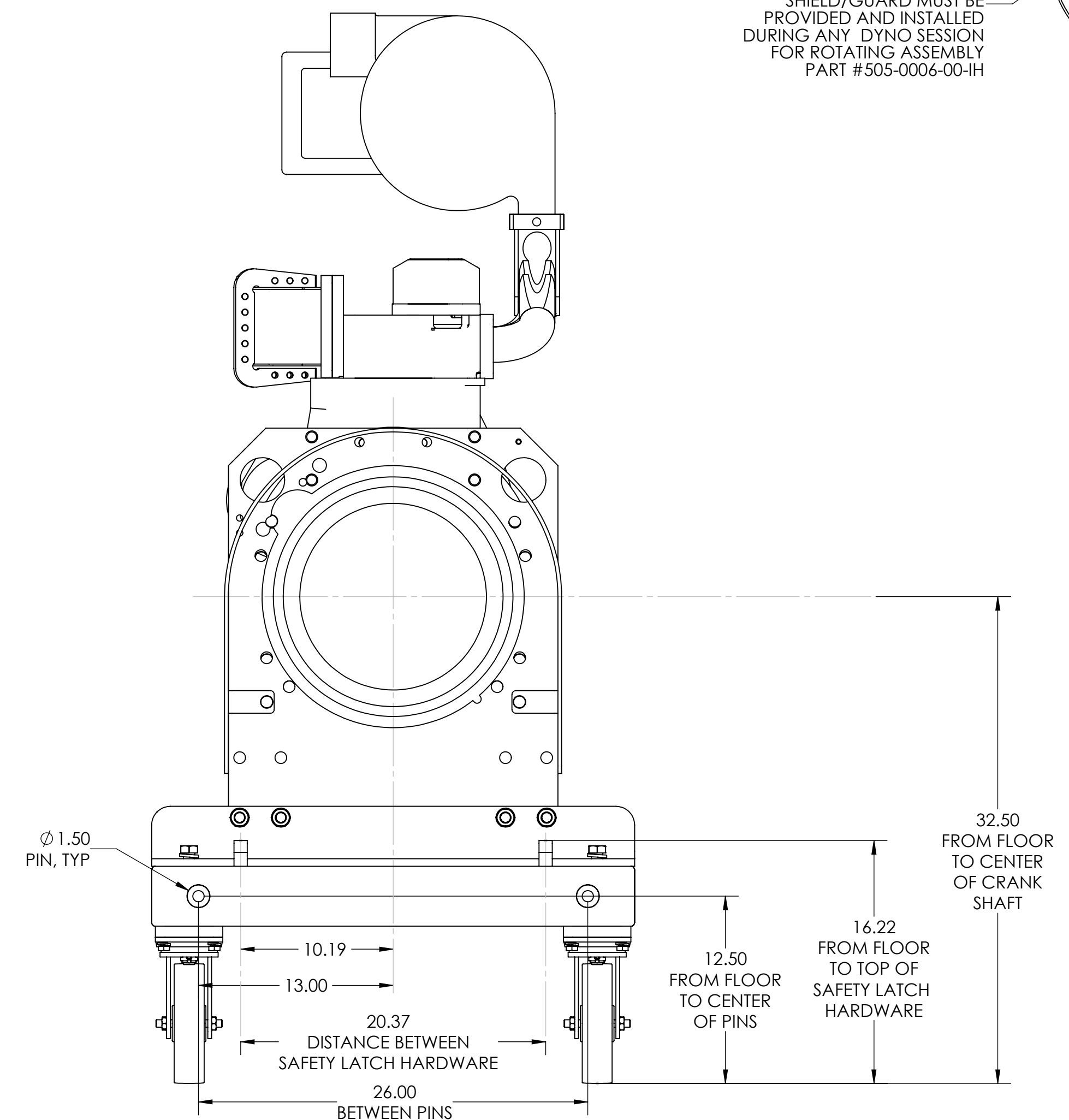
ENGINE SHOWN AS  
REFERENCE ONLY

15.00 MIN.  
17.00 MAX.  
DISTANCE FROM EDGE  
OF DYNO CART TO  
DIAPHRAGM PRESSURE PLATE

2.13 PIN  
DISTANCE  
FROM FRAME

SAFETY LATCH  
PART NUMBER 025-0390-00-MC  
CAN BE PURCHASED THROUGH  
WIPEOUT ENTERPRISES INC.

DETAIL A  
SCALE 2 : 7



Ø 1.50  
PIN, TYP

10.19  
13.00  
20.37  
DISTANCE BETWEEN  
SAFETY LATCH HARDWARE

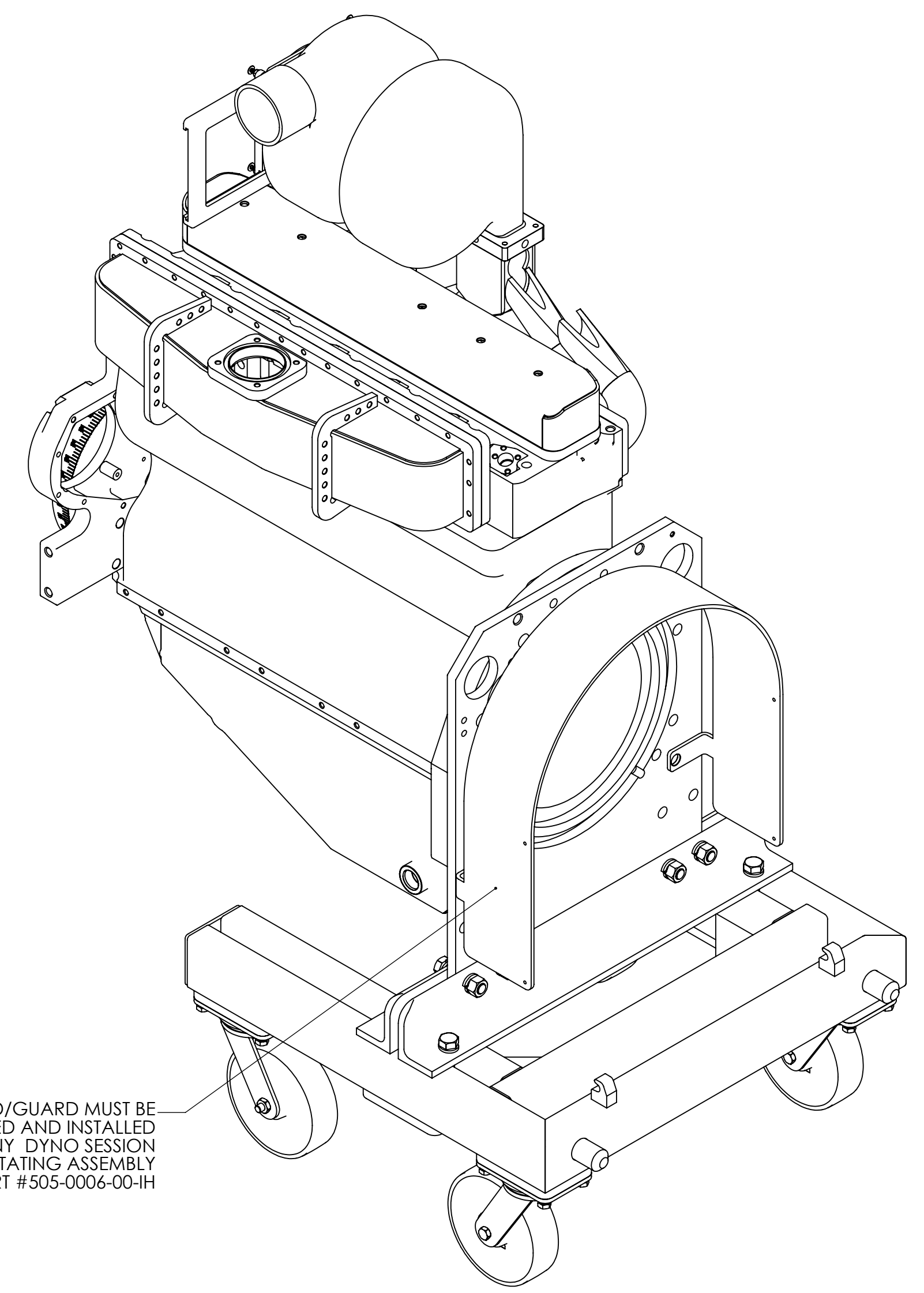
26.00  
BETWEEN PINS

12.50  
FROM FLOOR  
TO CENTER  
OF PINS

16.22  
FROM TOP OF  
SAFETY LATCH  
HARDWARE

32.50  
FROM FLOOR  
TO CENTER  
OF CRANK  
SHAFT

SHIELD/GUARD MUST BE  
PROVIDED AND INSTALLED  
DURING ANY DYNO SESSION  
FOR ROTATING ASSEMBLY  
PART #505-0006-00-IH



<p>REVISION LEVEL: 0 UNLESS OTHERWISE SPECIFIED</p> <p>Machining Tolerances XXX ± .005 XX ± .010 X ± .015 Angles ± .1°</p> <p>Weldment / Fabrication Tolerances Mold Thickness (1" or less) Length D ± .010 Over 36 ± .020 Over 36 ± .030</p> <p>Mold Thickness (1" Length) D ± .010 Over 36 ± .020 Over 36 ± .030</p> <p>Dimensions Apply After Finish Break All Sharp Corner Min .005, Max .015 2D and 3D Machine Stock Size All Machining To Be (250RA) Or Better 2D Angle Projection 3D First Angle Projection Dimensions Shown in Inches</p> <p>DRAWN: _____ DATE: _____ APPROVED: T.LUDWIG DATE: 3/17/2015 DAW DATE: 3/25/2015</p>	<p>THE INFORMATION CONTAINED IN THIS DOCUMENT IS DISCLOSED IN CONFIDENCE AND IS THE EXCLUSIVE PROPERTY OF WIPE OUT ENTERPRISES, INC. (WOE). ANY DISCLOSURE, DISTRIBUTION, AND/OR REPRODUCTION IN PART OR WHOLE WITHOUT PERMISSION FROM WOE IS PROHIBITED.</p> <p><b>Wipe Out Enterprises, Inc.</b> 6523 Dawson Road Sidney, Ohio 45365</p> <p><b>Dyno Cart Set-Up Instructions</b></p>	<p>SCALE: 1:7 PART: 001-0018-00-MC SHEET: 1 of 1</p>
--	--	--