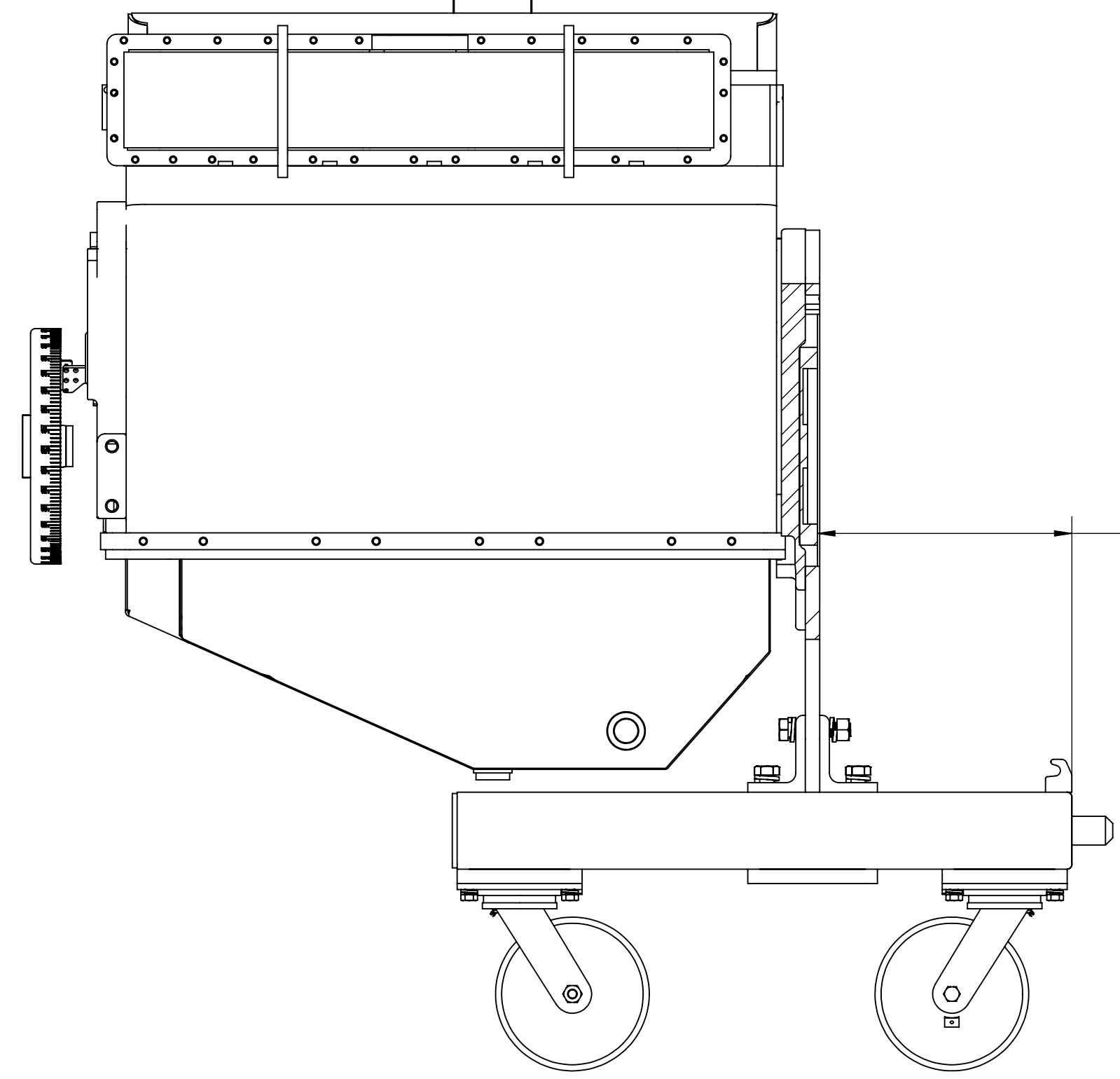


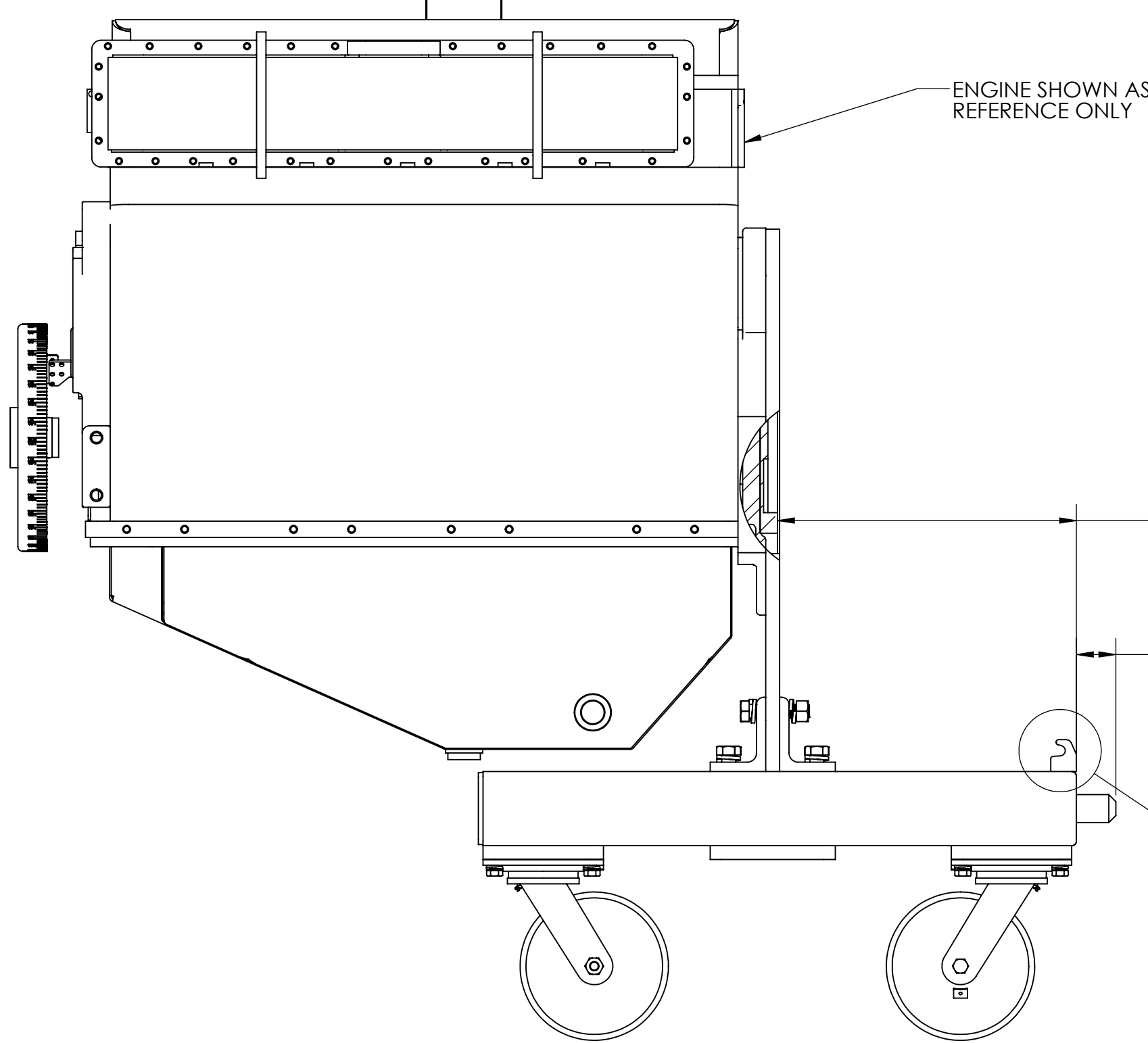
CROWER PRESSURE PLATE INFORMATION



13.25 MIN.
14.25 MAX.
DISTANCE FROM
EDGE OF DYNO
CART TO CROWER
PRESSURE PLATE



DIAPHRAGM PRESSURE PLATE INFORMATION

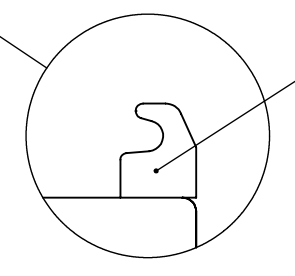


ENGINE SHOWN AS
REFERENCE ONLY

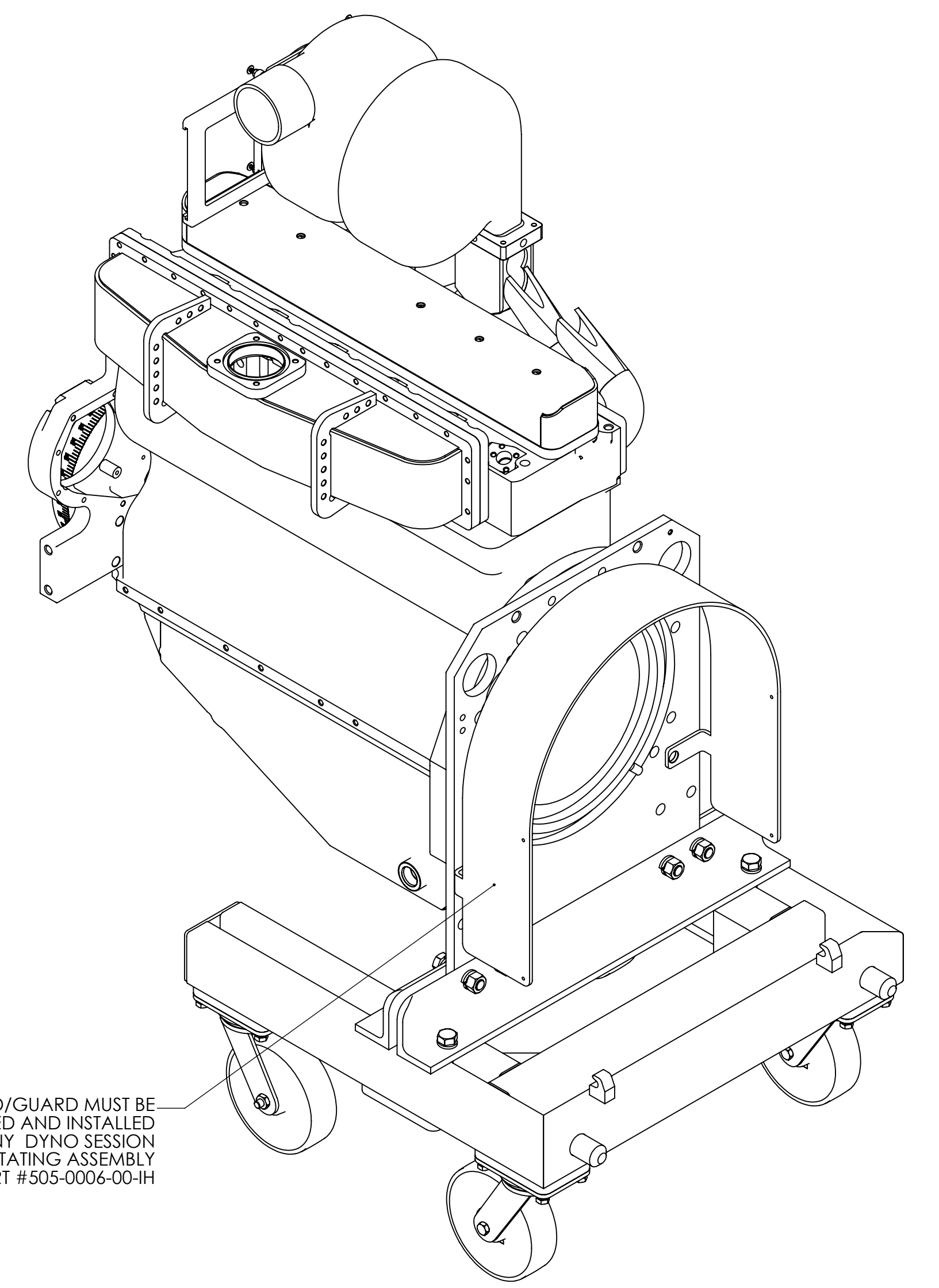
15.00 MIN.
17.00 MAX.
DISTANCE FROM EDGE
OF DYNO CART TO
DIAPHRAGM PRESSURE PLATE

2.13 PIN
DISTANCE
FROM FRAME

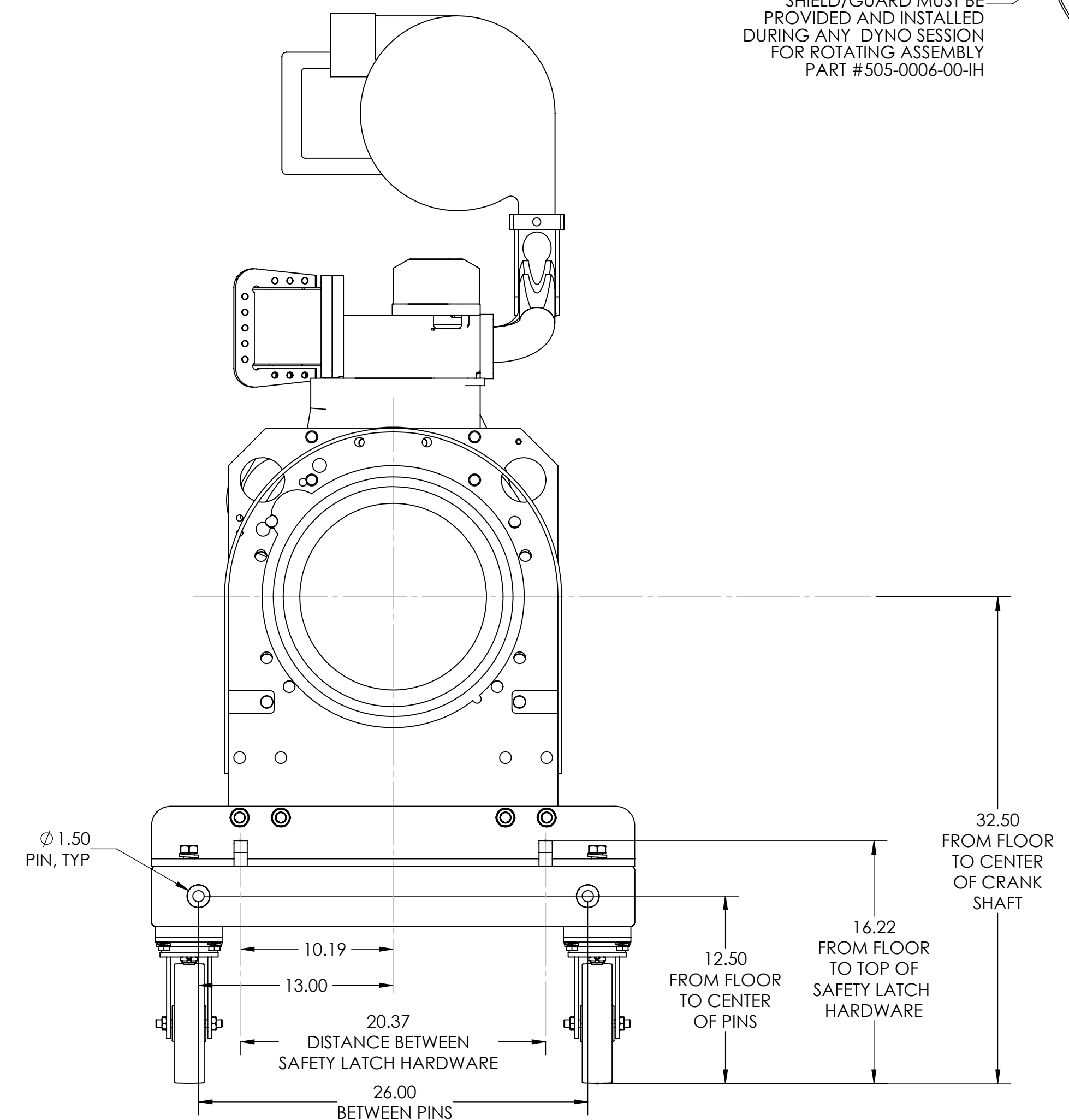
SAFETY LATCH
PART NUMBER 025-0390-00-MC
CAN BE PURCHASED THROUGH
WIPEOUT ENTERPRISES INC.



DETAIL A
SCALE 2 : 7



SHIELD/GUARD MUST BE
PROVIDED AND INSTALLED
DURING ANY DYNO SESSION
FOR ROTATING ASSEMBLY
PART #505-0006-00-IH



REVISION LEVEL: 0 UNLESS OTHERWISE SPECIFIED Machining Tolerances .001 ± .001 .005 ± .005 .010 ± .010 Angles ± .1° Weldment / Fabrication Tolerances Min Thickness (1" or less) Length 1/8 ± .005 1/4 ± .010 3/8 ± .015 1/2 ± .020 3/4 ± .025 1 ± .030 Min Thickness > 1" Length 1/8 ± .005 1/4 ± .010 3/8 ± .015 1/2 ± .020 3/4 ± .025 1 ± .030 Dimensions Apply After Finish Break All Sharp Corner Min .005, Max .015 2D Hole Location Stock Size All Machining To Be 125(R) Or Better 2D Angle Projection 3rd Angle Projection Dimensions Shown in Inches DRAWN: DATE:		THE INFORMATION CONTAINED IN THIS DOCUMENT IS DISCLOSED IN CONFIDENCE AND IS THE EXCLUSIVE PROPERTY OF WIPE OUT ENTERPRISES, INC. (WOE). ANY DISCLOSURE, DISTRIBUTION, AND/OR REPRODUCTION IN PART OR WHOLE WITHOUT PERMISSION FROM WOE IS PROHIBITED.	
<p>Wipe Out Enterprises, Inc. 6523 Dawson Road Sidney, Ohio 45365</p>		DESCRIPTION:	
		Dyno Cart Set-Up Instructions	
T.LUDWIG APPROVED: DATE: 3/17/2015 DAW	DATE: 3/25/2015	SCALE: 1:7	PART: 001-0018-00-MC
DRAWING SIZE: D		SHEET: 1 OF 1	SAVED DATE: 3/25/2015